

CERTIFICATE OF LOCATION OF GOVERNMENT CORNER

NORTH QUARTER Corner of Section 14, Township 107, Range 39, 5TH P.M.

STATE OF MINNESOTA, County of MURRAY

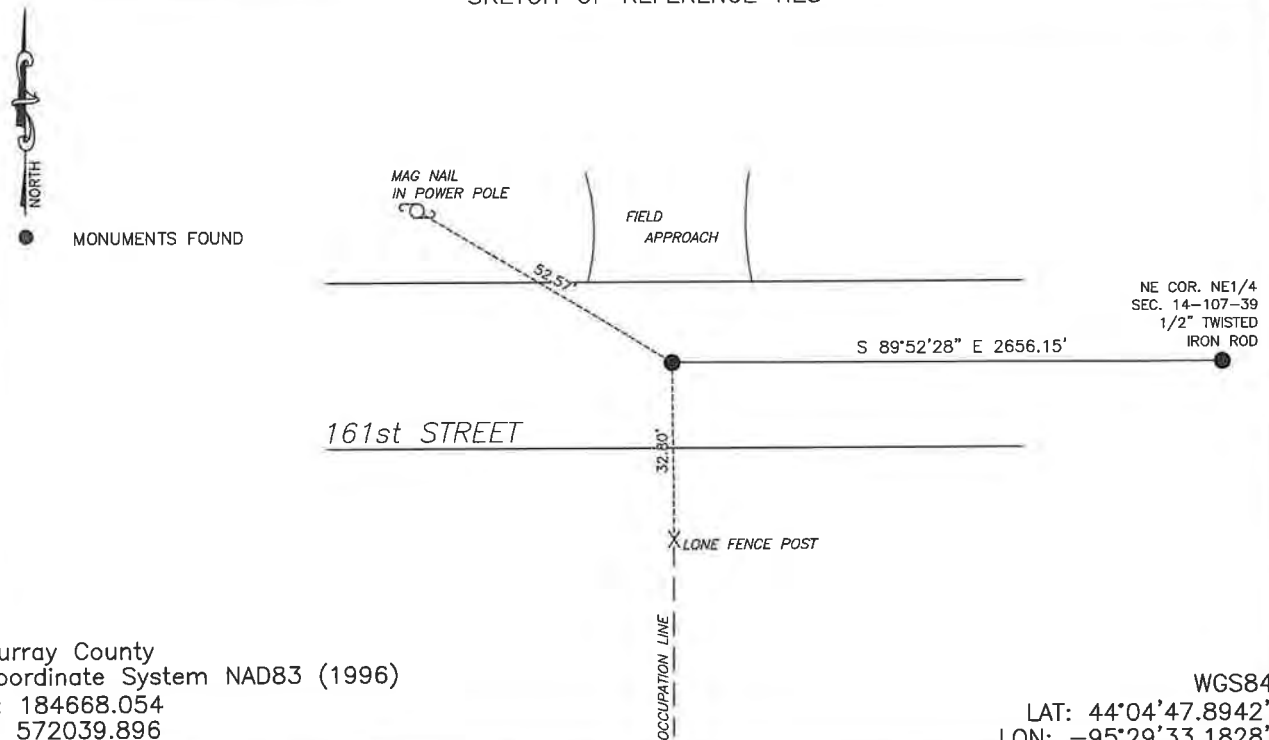
At the corner location shown on the sketch:

☒ On 4/30/2025 found a 3/4" pipe with seal #23008
DATE

☒ left monument as found, ☐ lowered monument, ☐ removed monument (explain)

☐ On _____ placed a _____
DATE

SKETCH OF REFERENCE TIES



Statement of evidence relative to this corner location is on back of page.

I hereby certify that this document and the data contained herein was prepared by me or under my direct supervision.

Daniel L. Bueltel
License No. 43844

6/19/2025
DATE

JUN 27 2025

MURRAY COUNTY RECORDER

Statement of Evidence

NORTH QUARTER SECTION 14, T107M, R39W, OF THE 5th P.M.

In July of 1861, J.W. Myers surveyed the township lines.

In September of 1861, L. Brockmann subdivided the township.

A survey by J.W. Woolstencroft dated April 10, 1907 notes a stone located at the corner.

County records show on November 13, 1997 Perry Zieske, LS #23008, located a stone and placed a pipe with his cap over top of the stone.

On August 27, 2020 Westwood Professional Services located an iron with seal #23008 at the corner.

On April 3, 2025 BuelteI-Moseng Land Surveying found a $\frac{3}{4}$ " pipe with seal #23008 at the corner.